

## Connecting to the Waypoint Support FTP site

Login credentials for the Waypoint Support FTP site are:

Site: [ftp.waypnt.com](ftp://ftp.waypnt.com)

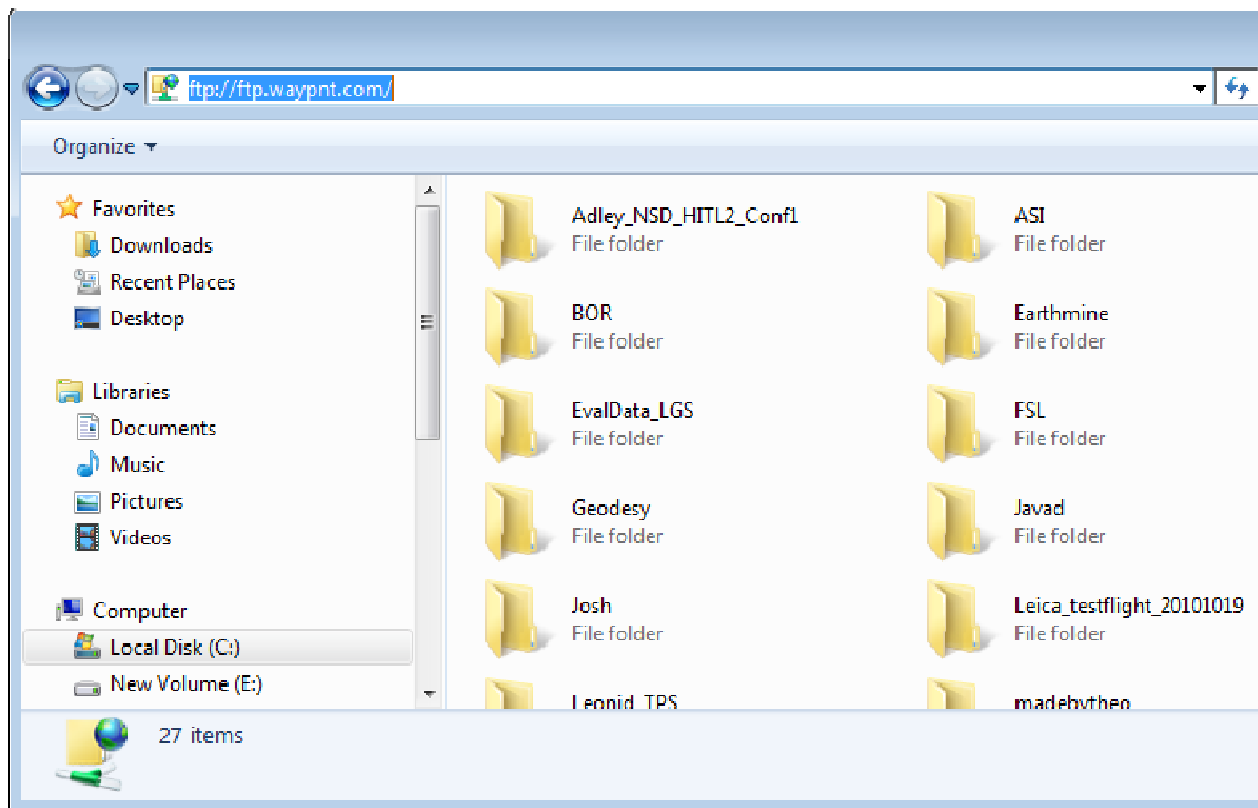
Username: waysupport

Password: shop0607box

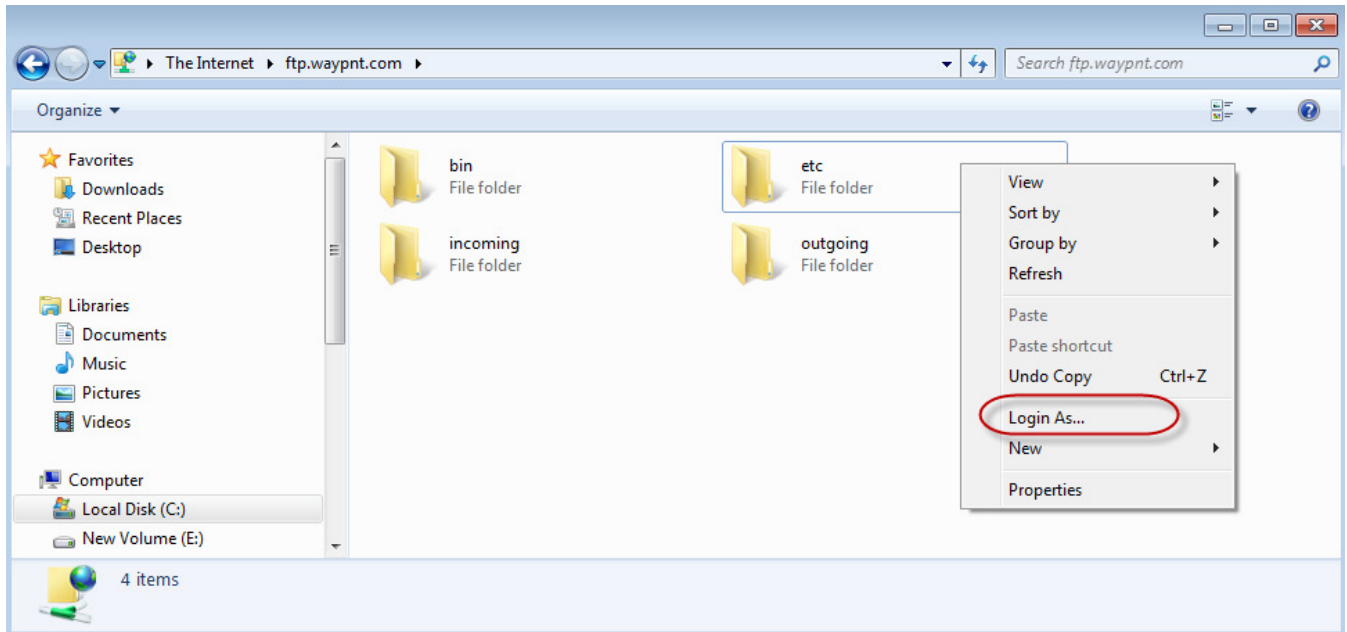
<ftp://waysupport:shop0607box@ftp.waypnt.com>

The easiest way of connecting to the FTP site is to use a dedicated FTP program, such as WS\_FTP. If this is not possible, the recommended approach is to use *Windows Explorer* (not Internet Explorer). In the *Address* bar at the top, paste the full link (<ftp://waysupport:shop0607box@ftp.waypnt.com>) and press 'Enter'.

This should give you a folder view of the FTP site as shown in the image below. You should be logged in with the above credentials, but the *Address* bar will report [ftp.waypnt.com](ftp://ftp.waypnt.com) (hiding the login credentials).

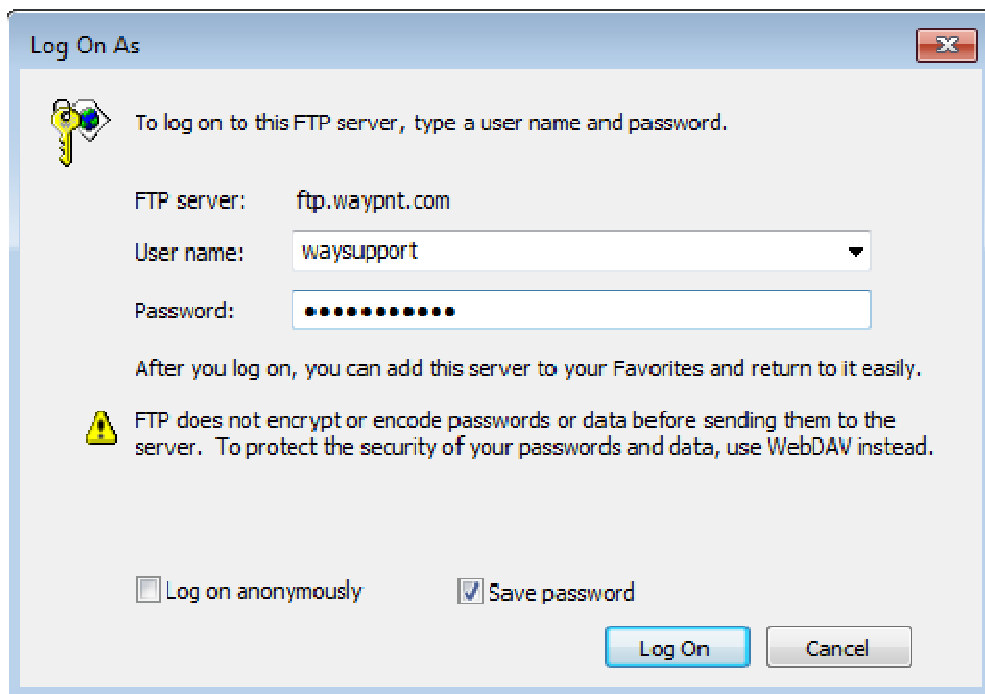


If the window only populates with “bin”, “etc”, “incoming” and “outgoing” folders, then you can right-click in the window and select “Login As..”



In the box that appears, you can enter the login/password:

Username: waysupport  
Password: shop0607box



This should log you into the FTP site so that you can see the folders shown in the first screenshot of this e-mail. If you have any questions please contact [support@novatel.ca](mailto:support@novatel.ca)